

Join Your Employee Safety & Health Committee

Be a part of the safety solution!



**To Join, Talk to Your Manager & Call Bonnie
(37825), Jon (37387) or Dan (35397)**

Safety Coordinator Role



Employee Health & Safety Committee

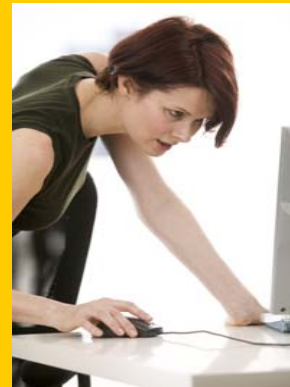
Share Talking Points w/co-workers



Safety Observations



Safety Council



Put in work request and track.



Listen to front line worker concerns and take action.

Safety Coordinators

EHS Committee Members

General Responsibilities (2-hours per month)

- Attend the monthly training/meeting
- Share learned Information / talking points with your own department
- Bring ideas and solutions for safer work environment to committee
- Get safety concerns fixed with help from committee
- Do Behavior Based Safety Observations - Be a safety coach

Problem Solving: You will . . .

- **Act as an employee safety advocate.**
- **Be receptive to employee concerns and coordinate safety issues between department employees and management.**
- **Report safety concerns to your Manager and through the MP2 system for action.**



Access to Reporting & Tracking

Providence Health & Services

ST. PETER HOSPITAL

[PH&S Intranet](#) [Service Areas](#) [Featured Sites](#) [Core Values](#)

Employee Health & Wellness

Search: [Advanced Search](#) | [Search Tips](#)

Bringing Balance To Your Life

Home

Areas

[Employee Health Services](#)
[Injury Management](#)
[Injury Prevention](#)
[Wellness Program](#)

Other

[Commuter Trip Reduction](#)
[Employee Activities \(EAC\)](#)
[LifeBalance Program](#)
[PSPH Cycling Homepage](#)
[Sharps Committee](#)
[Emp Safety & Health Comm](#)

Services

[Calendar of Activities](#)
[CORE Strengthening](#)
[Department Contacts](#)
[Early Intervention](#)
[Ergonomics](#)
[StepUp](#)
[TWO Program](#)

Forms And Documents

[Employee Area](#)
[Manager Area](#)

Employee Safety Concerns

[Safety Concerns Log](#)

Instructions for reporting Safety Concerns

- Fill out and submit an UOR or MP2 work request - whichever is most appropriate
- If you have additional information or concerns that are not included in the MP2 or UOR forms please use the link below to email your concern to the committee.

[Email your Safety Concern to the Safety Committee](#)

[UOR](#)



[MP2](#)



Safety Coordinators Website

Providence Health & Services

ST. PETER HOSPITAL

PH&S Intranet Service Areas Featured Sites Core Values

Employee Health & Wellness

Search: Go [Advanced Search](#) | [Search Tips](#)

Bringing Balance To Your Life

Home

Areas

[Employee Health Services](#)
[Injury Management](#)
[Injury Prevention](#)
[Wellness Program](#)

Other

[Commute Trip Reduction](#)
[Employee Activities \(EAC\)](#)
[LifeBalance Program](#)
[PSPH Cycling Homepage](#)
[Sharps Committee](#)
[Emp Safety & Health Comm](#)

Services

[Calendar of Activities](#)
[CORE Strengthening](#)
[Department Contacts](#)
[Early Intervention](#)
[Ergonomics](#)
[StepUp](#)
[TWO Program](#)

Forms And Documents

[Employee Area](#)

[Employee Safety & Health Committee](#)

[Accident Investigation Summaries](#)

[Employee Health and Safety Committee Documents](#)

Charter, Meeting Schedule and Minutes for ESHC

[Employee Incident Review Team \(EIRT\)](#)

Meeting schedule, Attendance Log and Committee Minutes

[Employee Safety Concerns](#)

Report a concern, Safety Concerns Log, and Instructions on how to report a safety concern

[Safety and Health Bulletins](#)

Breaking News in Safety, Education, and online training

[Safety Coordinators Page](#)

[Safety Coordinator Roles and Responsibilities](#)
[Online Training for Safety Coordinators](#)
[Safety Coordinator Exam](#)
[Safety Coordinator Progress Log](#)



Be On The Safe Patient Handling Sub Committee

Help PSPH

- Develop a house wide policy for all shifts and units that can be implemented to protect staff and patients
- Make patient handling and ergonomic equipment recommendations
- Conduct a patient handling hazard assessment for your unit
- Help others understand how to use equipment
- Be the employee safety educator/advocate
- Consider use of equipment in new or renovation plans



Perks

- Free refreshments
- Monthly Prize Drawing for those who attend
- Bi-Annual Prize Drawing – (each time you attend your name goes into this drawing)
- Know what is happening, and be part of the solutions
- Putting together reference book for learning opportunities
- Have an email address and time set aside to check and respond to it



Safety Observations

Here is what you WILL do...

- Gather Data
- Checklist based on accident data
- Discussion data on perceived hazards
- Give Feedback
- Positive Coaching
- Address Concerns

